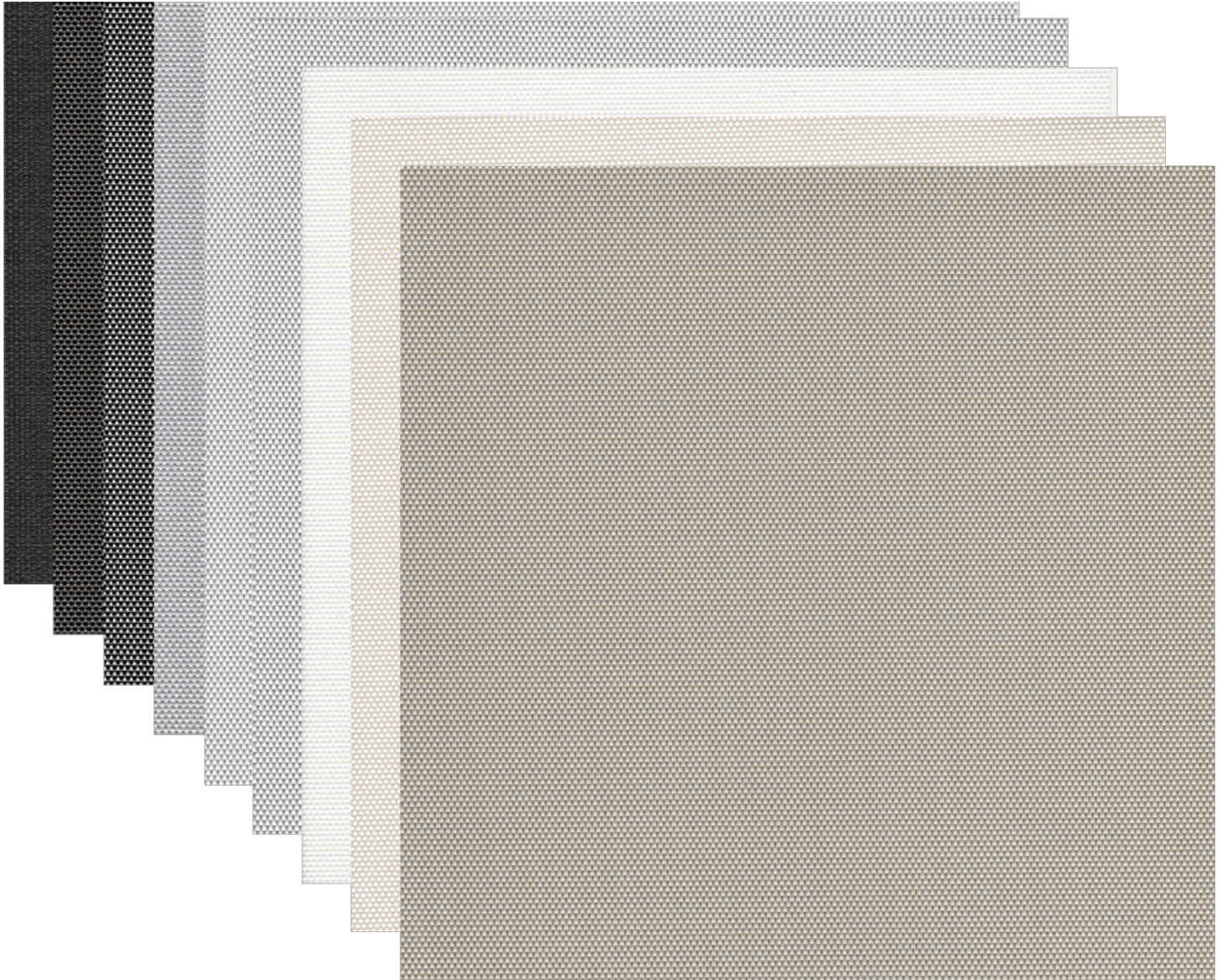


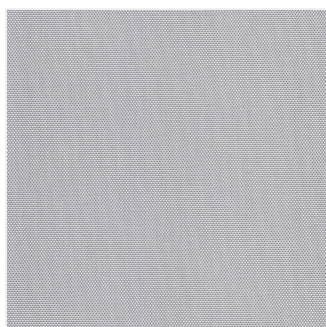
# SOLOSCREEN® 0.5%

Professional Architectural Specification

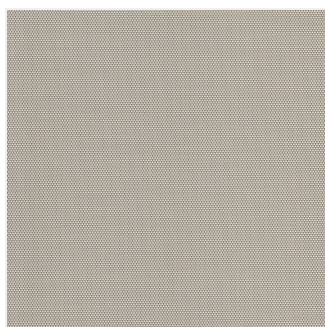


## AVAILABLE COLORWAYS

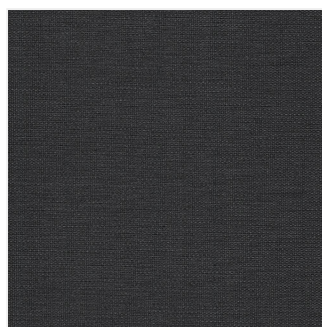
---



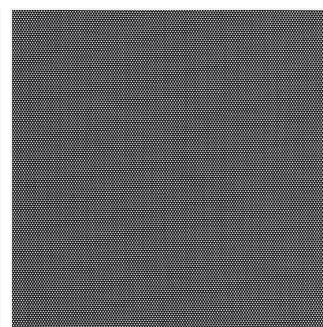
Ash



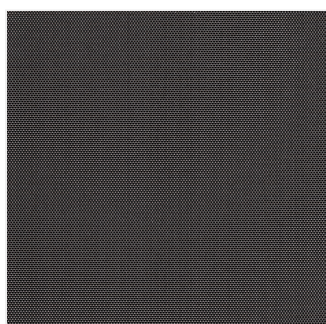
Beige-grey



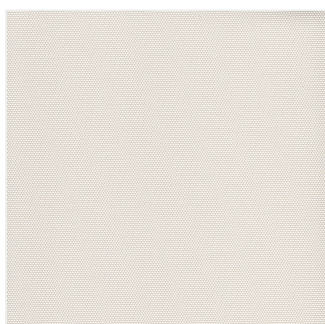
Black



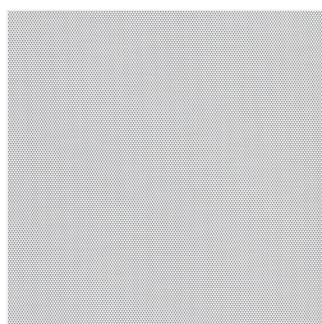
Black-pewter



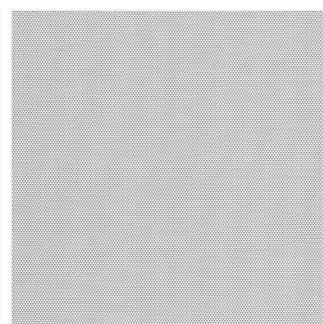
Bronze-black



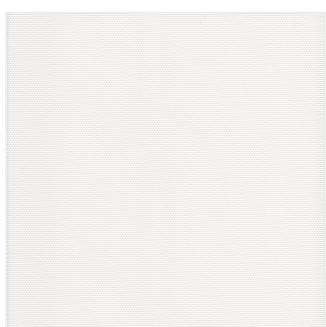
White-beige



White-birch



White-grey



White

## TECHNICAL SPECIFICATIONS

### DESCRIPTION

## ARCHITECTURAL PERFORMANCE & OCCUPANT PRIVACY

The **SoloScreen® 0.5% Series** represents the pinnacle of high-density solar textiles, engineered specifically for the demanding requirements of modern commercial and institutional environments. By utilizing a precision micro-weave, this fabric serves as a critical interface between the building's interior and the external environment, effectively mitigating solar heat gain and extreme luminosity. Designed for the "latter" stage of architectural detailing—where occupant comfort meets functional discretion—the 0.5% openness factor provides an almost opaque barrier against prying eyes while harvesting usable daylight. This makes it an essential specification for elevations with high solar exposure or ground-level storefronts requiring maximum security without the "closed-off" feel of a total blackout.

### Key Performance Attributes

- **Advanced Glare Mitigation:** Engineered to eliminate "washout" on digital displays, making it ideal for high-tech conference rooms and educational facilities.
- **Unrivaled Privacy:** The dense textile structure ensures daytime and nighttime privacy, a vital requirement for healthcare and clinical settings.
- **Structural Integrity:** The high-tenacity polyester core provides exceptional dimensional stability, ensuring the fabric remains flat and true even in large-format commercial window spans.

### Fenestration Properties

[wpdatatable id=5 table\_view=regular]

### KEY CHARACTERISTICS

Information for this section is coming soon. Please contact us to request this data.

### TECHNICAL DATA

Information for this section is coming soon. Please contact us to request this data.

### TECHNICAL SPECS

Information for this section is coming soon. Please contact us to request this data.

### CARE & HANDLING

### Care and Handling

To maintain the aesthetic and functional integrity of the **SoloScreen 0.5%** micro-weave, follow these architectural maintenance guidelines:

- **Regular Maintenance:** Remove surface dust frequently using a soft cloth or a vacuum cleaner with a brush attachment on a low-suction setting.
- **Spot Cleaning:** Use a sponge or soft cloth dampened with a mild, non-abrasive soapy water solution. Avoid excessive rubbing to prevent damage to the PVC coating.

- **Drying:** Ensure the shade is fully dry before retracting into the headbox or roller system to prevent the formation of mildew or tracking issues.
- **Avoid Chemicals:** Do not use solvents, bleach, or abrasive scouring agents, as these can degrade the technical yarns and affect the fabric's fire-retardant properties.