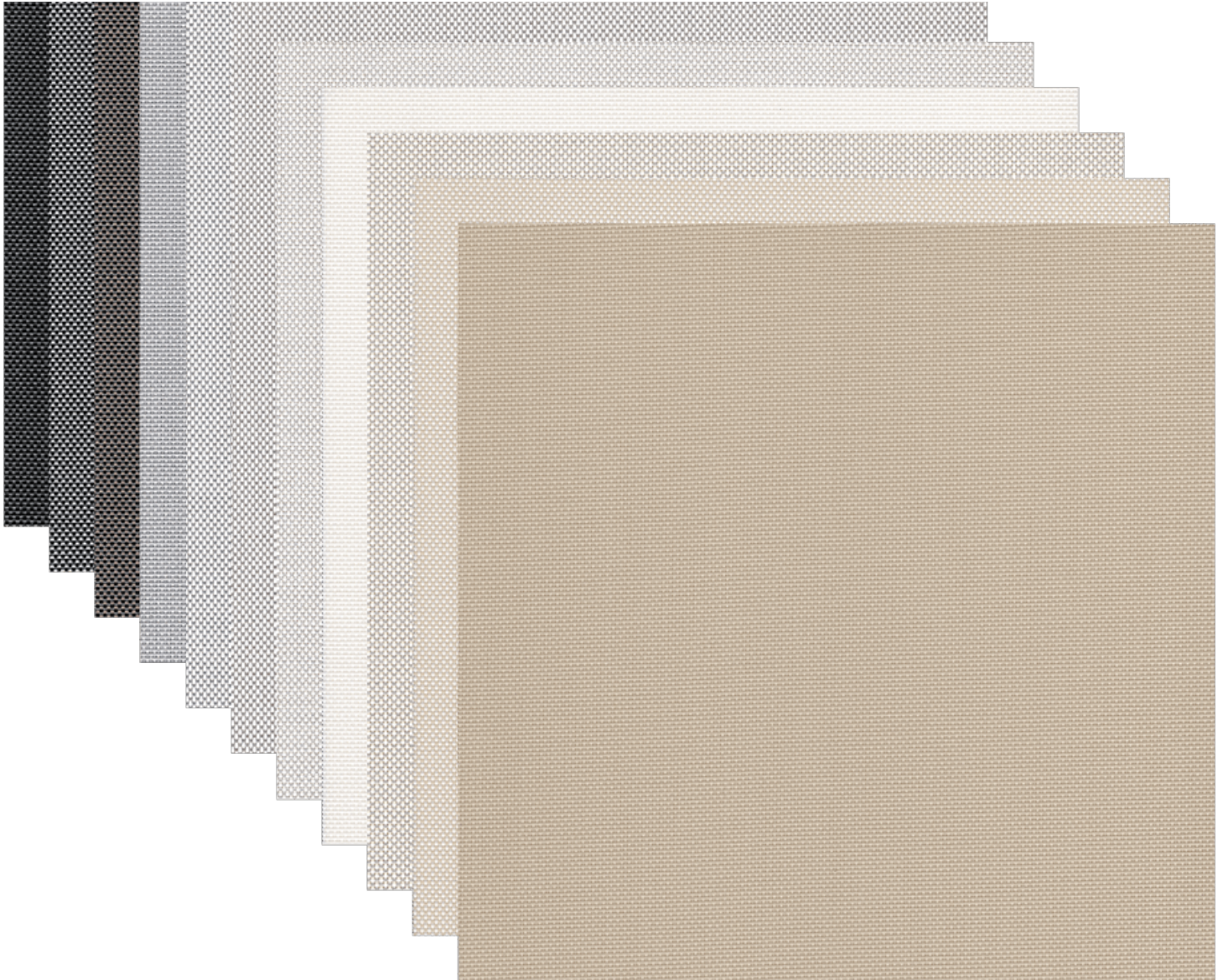
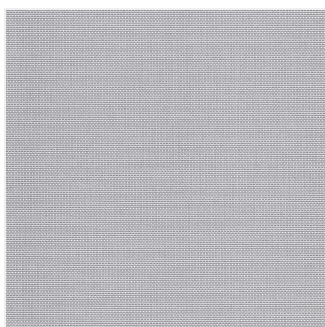


SOLOSCREEN® 3%

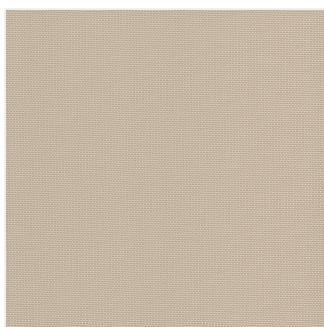
Professional Architectural Specification



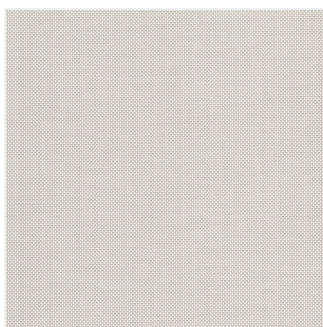
AVAILABLE COLORWAYS



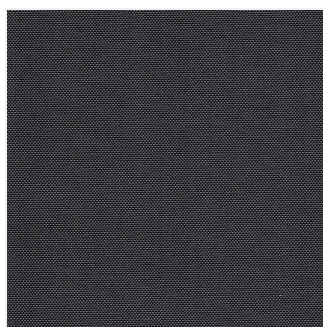
Ash



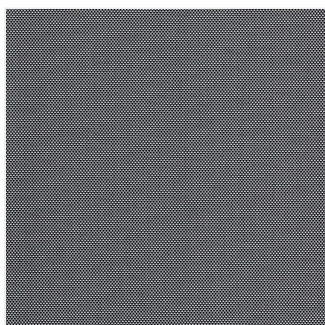
Beige



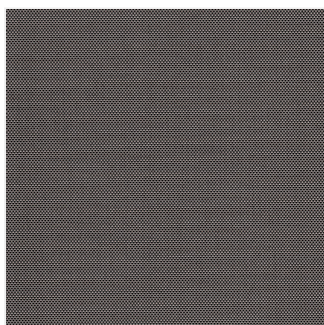
Beige-grey



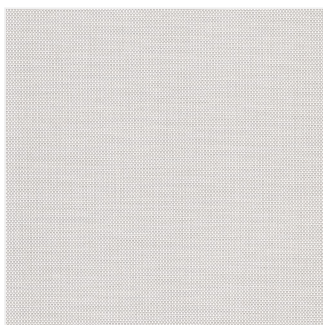
Black



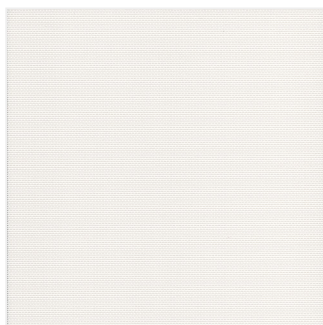
Black-pewter



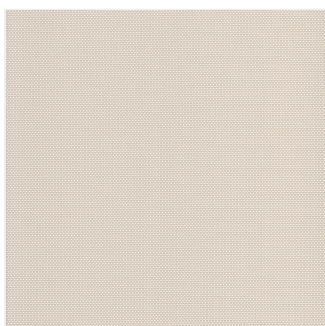
Bronze-black



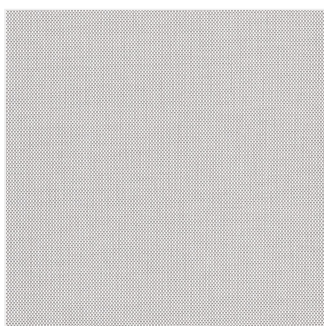
Taupe



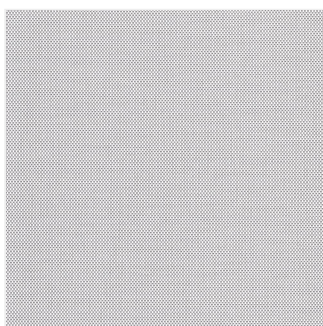
White



White-beige



White-birch



White-grey

TECHNICAL SPECIFICATIONS

DESCRIPTION

SOLOSCREEN 3% | PROFESSIONAL GRADE SOLAR FABRIC

The Architectural Standard for Balanced View and Thermal Control

SoloScreen 3% is a high-performance solar screening solution engineered for commercial and high-end residential projects. Designed with a 3% openness factor, this fabric provides the ideal compromise between outward visibility and superior solar heat gain reduction. For architects and specifiers, the SoloScreen 3% series is the industry standard for workspaces and living areas where maintaining a connection to the outdoors is required without compromising occupant comfort. It offers a refined level of glare reduction, making it ideal for LEED-certified projects and energy-efficient building envelopes.

Fenestration Properties

[wpdatatable id=3 table_view=regular] Keys: **TS** = Solar Transmittance, **RS** = Solar Reflectance, **AS** = Solar Absorptance, **TV** = Visual Transmittance, **SHGC** = Solar Heat Gain Coefficient, **1/4 CL** = 1/4" Clear Glass, **1 HA** = 1" Heat Absorbing Glass

Professional Specifications & Performance

- **Optimized View-Through:** Precision weave allows for clear outward visibility while managing interior light levels and solar exposure.
- **Superior Glare Management:** Effectively diffuses natural light to reduce eye strain in office and computing environments.
- **Thermal Efficiency:** Engineered to reflect solar radiation, significantly lowering interior cooling costs.

Sourced & Manufactured in California

Support domestic supply chains and reduce lead times. SoloScreen 3% is **Made in the USA (California)**, ensuring rigorous quality control and compliance with American manufacturing standards.

Technical Data Table

Technical Attribute	Specification
Openness Factor	3% (Balanced View/Protection)
Available Patterns	Ash, Beige, Beige Grey, Black, Black Pewter, Bronze Black, Taupe, White, White Beige, White Birch, White Grey
Manufacturing	Made in USA (California)
Application	Commercial/Residential Grade

KEY CHARACTERISTICS

Information for this section is coming soon. Please contact us to request this data.

TECHNICAL DATA

Information for this section is coming soon. Please contact us to request this data.

TECHNICAL SPECS

Information for this section is coming soon. Please contact us to request this data.

CARE & HANDLING

- **Regular Cleaning:** [PRIMARY_CLEANING_METHOD_E.G._VACUUM_OR_COMPRESSED_AIR].
- **Chemical Restrictions:** Do not use [PROHIBITED_SUBSTANCES_E.G._SOLVENTS_OR_ABRASIVES] which might damage the [FABRIC_COATING_OR_FINISH].
- **Deep Cleaning:** [DEEP_CLEANING_METHOD_E.G._RINSE_WITH_CLEAN_WATER].
[DRYING_INSTRUCTIONS_E.G._LEAVE_SHADE_DOWN_UNTIL_DRY].
- **Spot Treatment:** [SPOT_TREATMENT_METHOD_E.G._RUB_GENTLY_WITH_WHITE_PENCIL_ERASER] to remove small stains.
- **Pro-Tip:** [ADDITIONAL_CARE_NOTE_OR_NONE].