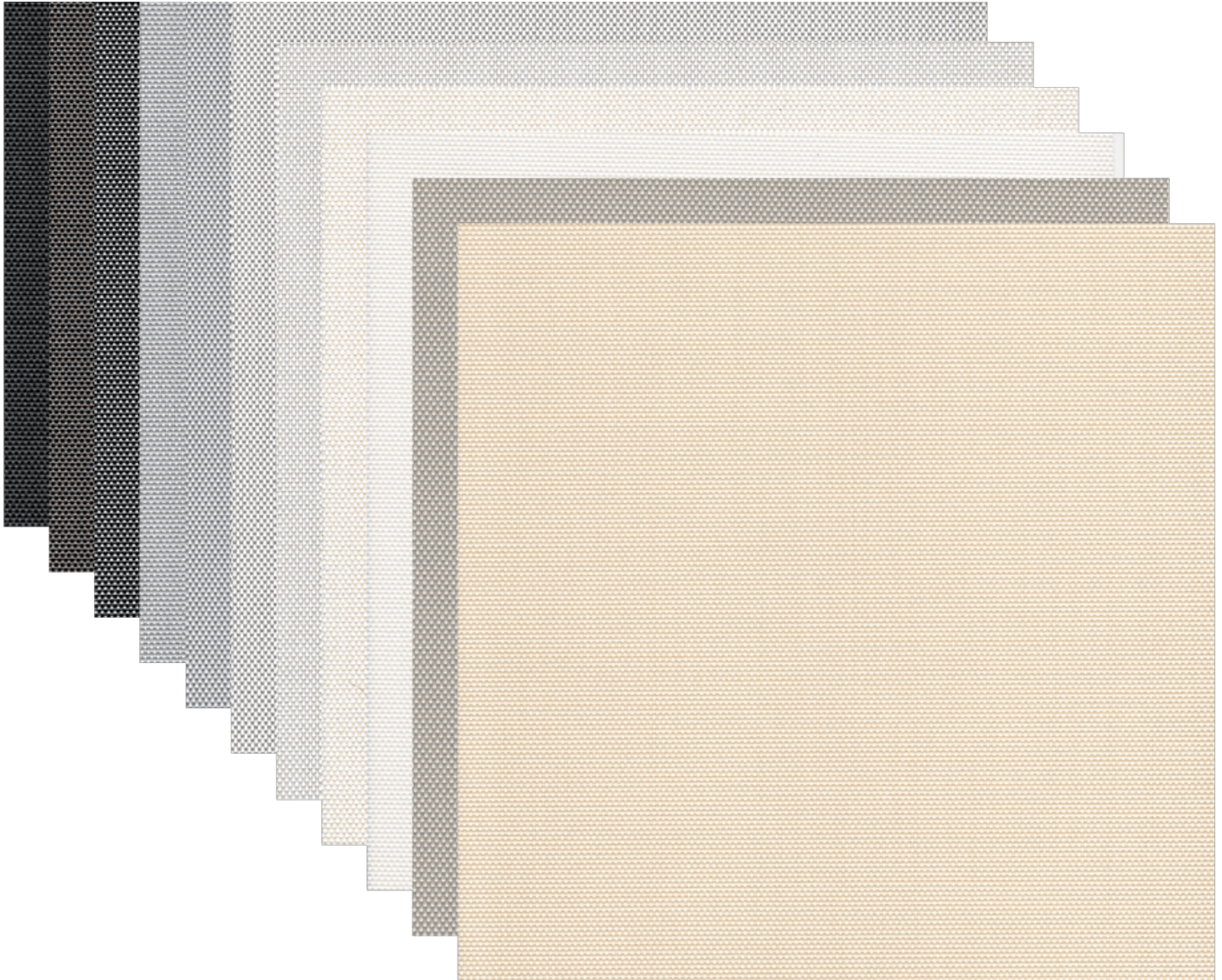
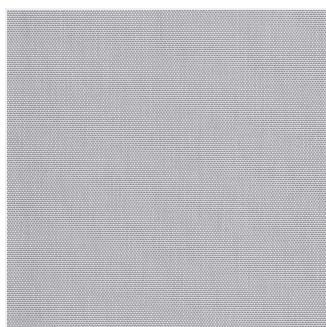


SOLOSCREEN® 1%

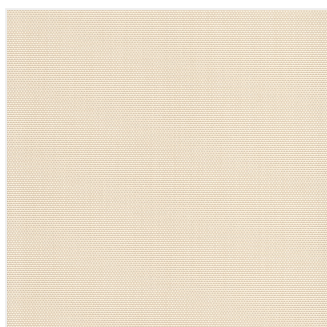
Professional Architectural Specification



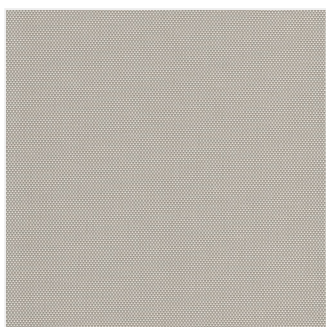
AVAILABLE COLORWAYS



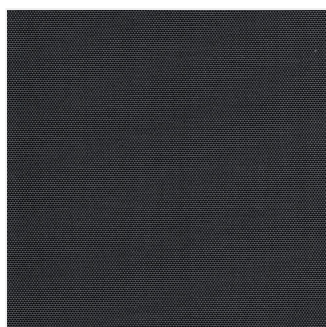
Ash



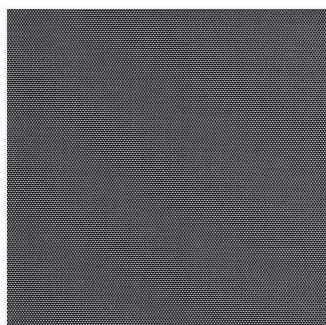
Beige



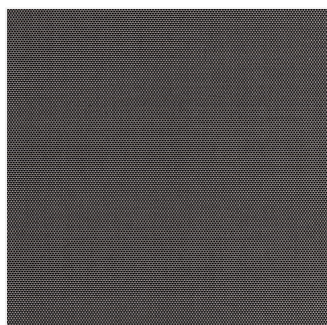
Beige-grey



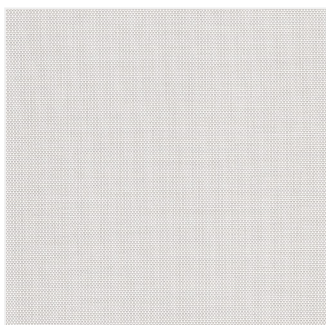
Black



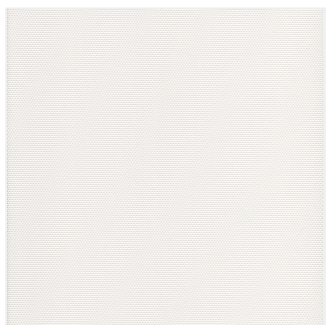
Black-pewter



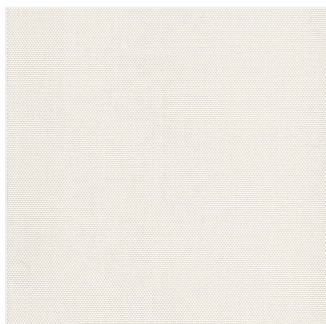
Bronze-black



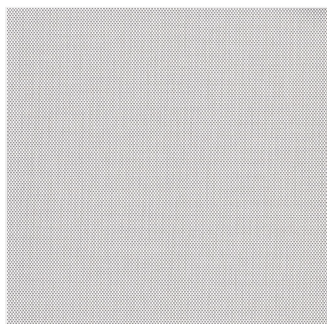
Taupe



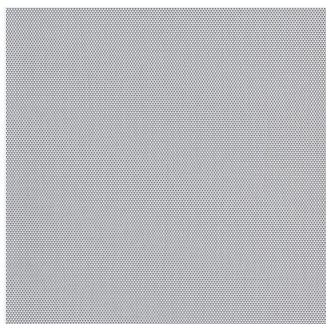
White



White-beige



White-birch



White-grey

TECHNICAL SPECIFICATIONS

DESCRIPTION

SOLOSCREEN 1% | HIGH-PERFORMANCE TECHNICAL SOLAR FABRIC

The Professional Choice for Superior Glare Control and Solar Density

SoloScreen 1% is a precision-engineered solar screening solution designed for high-end commercial and residential environments. With a 1% openness factor, this fabric provides a high-density weave for superior protection against harsh solar heat gain while still allowing for essential outward visibility. For architects and specifiers, the SoloScreen 1% series is the technical standard for high-exposure elevations and glass-heavy facades. It offers an elite level of glare reduction, making it the primary specification for LEED-certified workspaces, executive offices, and media rooms where precise light management is critical for productivity and comfort.

Fenestration Properties

[wpdatatable id=4 table_view=regular] Keys: **TS** = Solar Transmittance, **RS** = Solar Reflectance, **AS** = Solar Absorptance, **TV** = Visual Transmittance, **SHGC** = Solar Heat Gain Coefficient, **1/4 CL** = 1/4" Clear Glass, **1 HA** = 1" Heat Absorbing Glass

Professional Specifications & Performance

- **High-Density Weave:** The tight 1% weave provides a significant barrier against intense sunlight without eliminating the view.
- **Elite Glare Management:** Engineered to eliminate harsh reflections on screens and monitors in professional environments.
- **High Thermal Rejection:** Dramatically reduces solar heat gain to lower cooling costs and improve energy efficiency.

Sourced & Manufactured in California

Support domestic supply chains and reduce lead times. SoloScreen 1% is **Made in the USA (California)**, ensuring rigorous quality control and compliance with American manufacturing standards.

Technical Data Table

Technical Attribute	Specification
Openness Factor	1% (High Density / Controlled View)
Available Patterns	Ash, Beige, Beige Grey, Black, Black Pewter, Bronze Black, Taupe, White, White Beige, White Birch, White Grey
Manufacturing	Made in USA (California)
Application	Commercial Office / High-Exposure Facades

KEY CHARACTERISTICS

Information for this section is coming soon. Please contact us to request this data.

TECHNICAL DATA

Information for this section is coming soon. Please contact us to request this data.

TECHNICAL SPECS

Information for this section is coming soon. Please contact us to request this data.

CARE & HANDLING

- **Regular Cleaning:** [PRIMARY_CLEANING_METHOD_E.G._VACUUM_OR_COMPRESSED_AIR].
- **Chemical Restrictions:** Do not use [PROHIBITED_SUBSTANCES_E.G._SOLVENTS_OR_ABRASIVES] which might damage the [FABRIC_COATING_OR_FINISH].
- **Deep Cleaning:** [DEEP_CLEANING_METHOD_E.G._RINSE_WITH_CLEAN_WATER].
[DRYING_INSTRUCTIONS_E.G._LEAVE_SHADE_DOWN_UNTIL_DRY].
- **Spot Treatment:** [SPOT_TREATMENT_METHOD_E.G._RUB_GENTLY_WITH_WHITE_PENCIL_ERASER] to remove small stains.
- **Pro-Tip:** [ADDITIONAL_CARE_NOTE_OR_NONE].