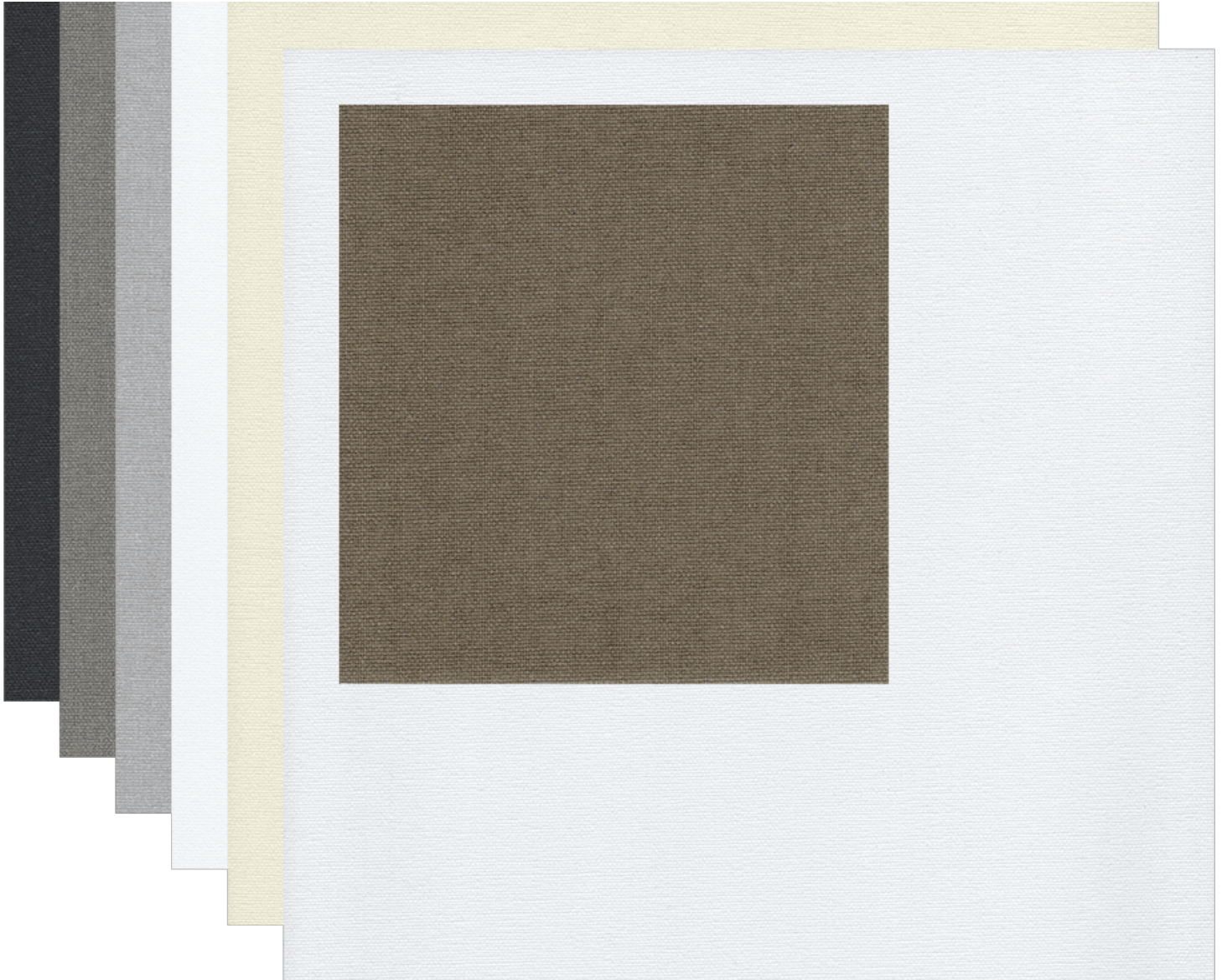


# GRANADA BLACKOUT

Professional Architectural Specification

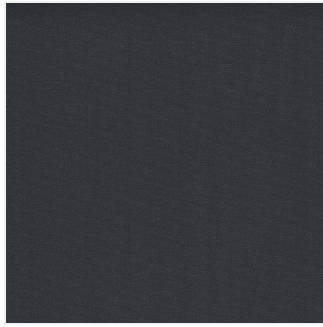


## AVAILABLE COLORWAYS

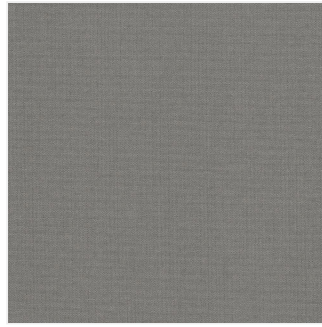
---



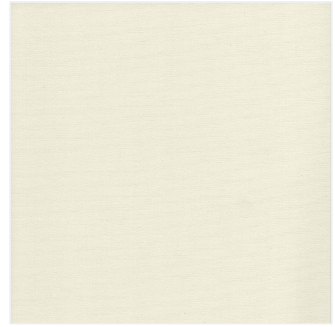
Bronze



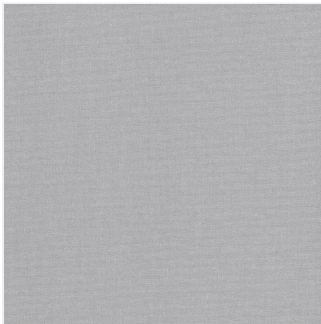
Charcoal



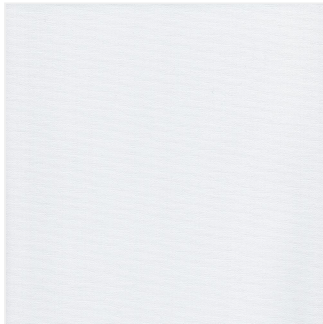
Dark-grey



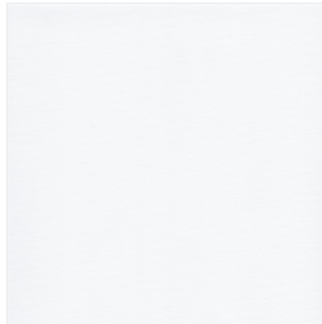
Ivory



Light-grey



White



White-backing

## TECHNICAL SPECIFICATIONS

### DESCRIPTION

## [FABRIC\_NAME] [OPENNESS\_%] | [PRIMARY\_BENEFIT\_TAGLINE]

### [SECONDARY\_MARKETING\_SUBHEAD]

[FABRIC\_NAME] [OPENNESS\_%] is a [PRODUCT\_CATEGORY\_TYPE] engineered for [PROJECT\_TYPES] where [SPECIFIC\_GOAL\_OR\_OBJECTIVE] is the primary objective. Designed with a [OPENNESS\_%] openness factor, this fabric provides [LEVEL\_OF\_VISIBILITY] while still delivering [THERMAL\_OR\_SOLAR\_PERFORMANCE\_LEVEL].

For architects and specifiers, the [FABRIC\_NAME] [OPENNESS\_%] series is the professional choice for [IDEAL\_BUILDING\_ELEVATIONS\_OR\_AREAS]. It offers a sophisticated balance of [BENEFIT\_1] and [BENEFIT\_2], making it ideal for modern building envelopes that prioritize [OCCUPANT\_VALUE\_PROPOSITION].

### Fenestration Properties

[wpdatatable id=[TABLE\_ID\_NUMBER] table\_view=regular] Keys: **TS** = Solar Transmittance, **RS** = Solar Reflectance, **AS** = Solar Absorptance, **TV** = Visual Transmittance, **SHGC** = Solar Heat Gain Coefficient, **1/4 CL** = 1/4" Clear Glass, **1 HA** = 1" Heat Absorbing Glass

### Professional Specifications & Performance

- [PERFORMANCE\_HEADER\_1]: [PERFORMANCE\_DESCRIPTION\_1]
- [PERFORMANCE\_HEADER\_2]: [PERFORMANCE\_DESCRIPTION\_2]
- [PERFORMANCE\_HEADER\_3]: [PERFORMANCE\_DESCRIPTION\_3]

### Sourced & Manufactured in [LOCATION]

[MANUFACTURING\_MARKETING\_STORY]. [FABRIC\_NAME] [OPENNESS\_%] is **Made in the [LOCATION]**, ensuring rigorous quality control and compliance with [LOCAL\_STANDARDS].

### Technical Data Table

Technical Attribute	Specification
Openness Factor	[OPENNESS_%] ([TRANSPARENCY_DESCRIPTION])
Available Patterns	[LIST_OF_COLORS_OR_PATTERNS]
Manufacturing	[MANUFACTURING_LOCATION_DETAILS]
Application	[IDEAL_APPLICATION_USAGE]

### KEY CHARACTERISTICS

Information for this section is coming soon. Please contact us to request this data.

### TECHNICAL DATA

Information for this section is coming soon. Please contact us to request this data.

## TECHNICAL SPECS

Information for this section is coming soon. Please contact us to request this data.

## CARE & HANDLING

- **Regular Cleaning:** [PRIMARY\_CLEANING\_METHOD\_E.G.\_VACUUM\_OR\_COMPRESSED\_AIR].
- **Chemical Restrictions:** Do not use [PROHIBITED\_SUBSTANCES\_E.G.\_SOLVENTS\_OR\_ABRASIVES] which might damage the [FABRIC\_COATING\_OR\_FINISH].
- **Deep Cleaning:** [DEEP\_CLEANING\_METHOD\_E.G.\_RINSE\_WITH\_CLEAN\_WATER].  
[DRYING\_INSTRUCTIONS\_E.G.\_LEAVE\_SHADE\_DOWN\_UNTIL\_DRY].
- **Spot Treatment:** [SPOT\_TREATMENT\_METHOD\_E.G.\_RUB\_GENTLY\_WITH\_WHITE\_PENCIL\_ERASER] to remove small stains.
- **Pro-Tip:** [ADDITIONAL\_CARE\_NOTE\_OR\_NONE].