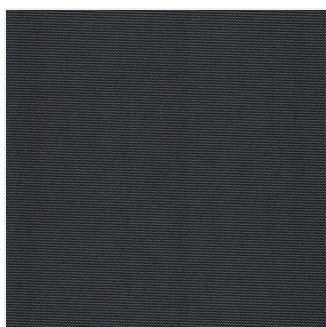


DUSK BLACKOUT

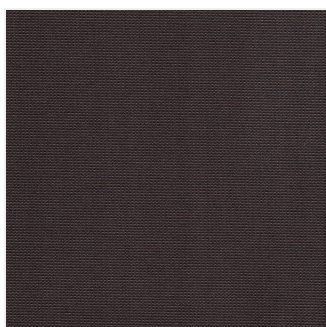
Professional Architectural Specification



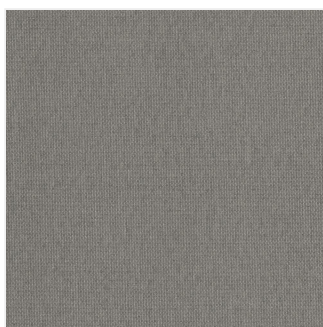
AVAILABLE COLORWAYS



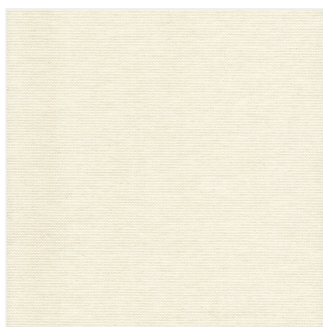
Black



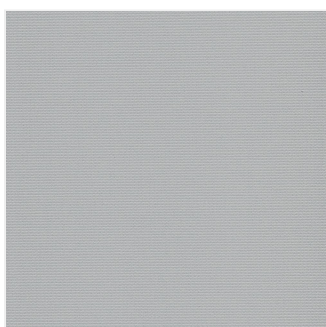
Chocolate



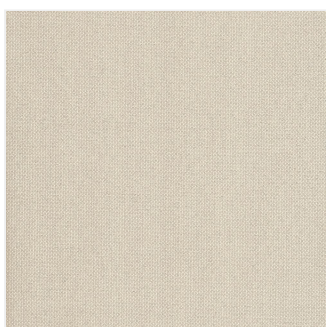
Dark-grey



Ivory



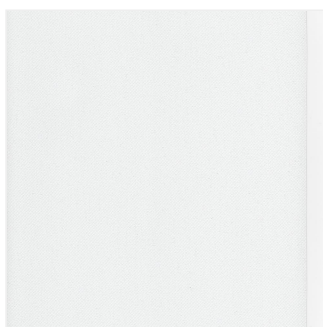
Light-grey



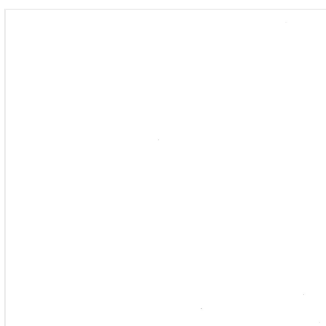
Mushroom



Sand



White



White-backing

TECHNICAL SPECIFICATIONS

DESCRIPTION

[FABRIC_NAME] [OPENNESS_%] | [PRIMARY_BENEFIT_TAGLINE]

[SECONDARY_MARKETING_SUBHEAD]

[FABRIC_NAME] [OPENNESS_%] is a [PRODUCT_CATEGORY_TYPE] engineered for [PROJECT_TYPES] where [SPECIFIC_GOAL_OR_OBJECTIVE] is the primary objective. Designed with a [OPENNESS_%] openness factor, this fabric provides [LEVEL_OF_VISIBILITY] while still delivering [THERMAL_OR_SOLAR_PERFORMANCE_LEVEL].

For architects and specifiers, the [FABRIC_NAME] [OPENNESS_%] series is the professional choice for [IDEAL_BUILDING_ELEVATIONS_OR_AREAS]. It offers a sophisticated balance of [BENEFIT_1] and [BENEFIT_2], making it ideal for modern building envelopes that prioritize [OCCUPANT_VALUE_PROPOSITION].

Fenestration Properties

[wpdatatable id=[TABLE_ID_NUMBER] table_view=regular] Keys: **TS** = Solar Transmittance, **RS** = Solar Reflectance, **AS** = Solar Absorptance, **TV** = Visual Transmittance, **SHGC** = Solar Heat Gain Coefficient, **1/4 CL** = 1/4" Clear Glass, **1 HA** = 1" Heat Absorbing Glass

Professional Specifications & Performance

- [PERFORMANCE_HEADER_1]: [PERFORMANCE_DESCRIPTION_1]
- [PERFORMANCE_HEADER_2]: [PERFORMANCE_DESCRIPTION_2]
- [PERFORMANCE_HEADER_3]: [PERFORMANCE_DESCRIPTION_3]

Sourced & Manufactured in [LOCATION]

[MANUFACTURING_MARKETING_STORY]. [FABRIC_NAME] [OPENNESS_%] is **Made in the [LOCATION]**, ensuring rigorous quality control and compliance with [LOCAL_STANDARDS].

Technical Data Table

Technical Attribute	Specification
Openness Factor	[OPENNESS_%] ([TRANSPARENCY_DESCRIPTION])
Available Patterns	[LIST_OF_COLORS_OR_PATTERNS]
Manufacturing	[MANUFACTURING_LOCATION_DETAILS]
Application	[IDEAL_APPLICATION_USAGE]

KEY CHARACTERISTICS

Information for this section is coming soon. Please contact us to request this data.

TECHNICAL DATA

Information for this section is coming soon. Please contact us to request this data.

TECHNICAL SPECS

Information for this section is coming soon. Please contact us to request this data.

CARE & HANDLING

- **Regular Cleaning:** [PRIMARY_CLEANING_METHOD_E.G._VACUUM_OR_COMPRESSED_AIR].
- **Chemical Restrictions:** Do not use [PROHIBITED_SUBSTANCES_E.G._SOLVENTS_OR_ABRASIVES] which might damage the [FABRIC_COATING_OR_FINISH].
- **Deep Cleaning:** [DEEP_CLEANING_METHOD_E.G._RINSE_WITH_CLEAN_WATER].
[DRYING_INSTRUCTIONS_E.G._LEAVE_SHADE_DOWN_UNTIL_DRY].
- **Spot Treatment:** [SPOT_TREATMENT_METHOD_E.G._RUB_GENTLY_WITH_WHITE_PENCIL_ERASER] to remove small stains.
- **Pro-Tip:** [ADDITIONAL_CARE_NOTE_OR_NONE].