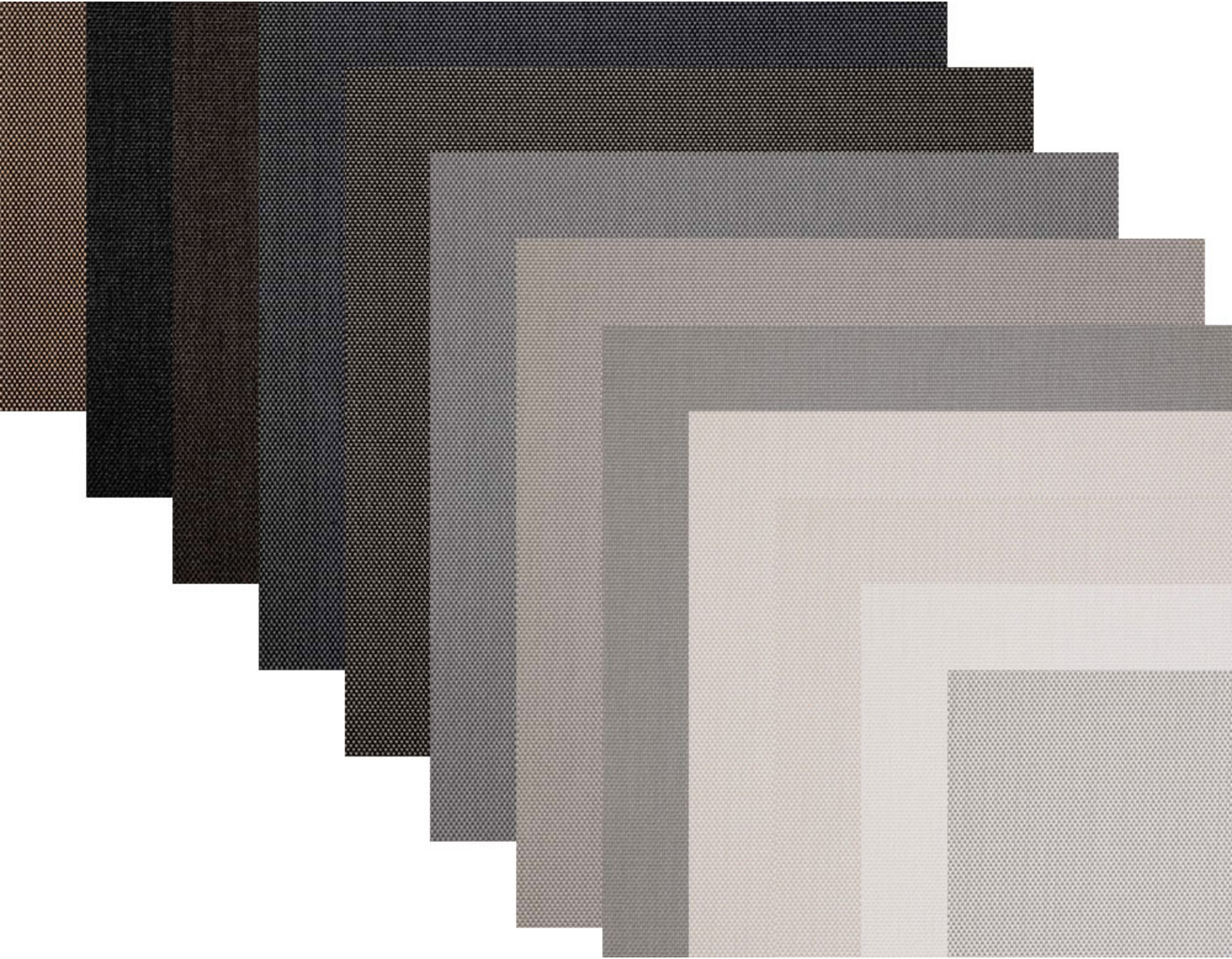
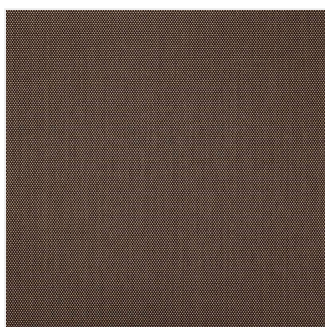


E SCREEN™ 1%

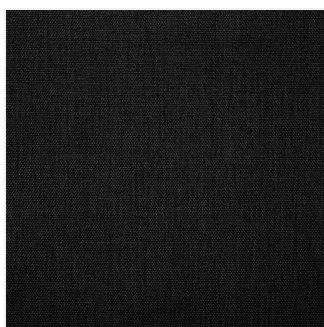
Professional Architectural Specification



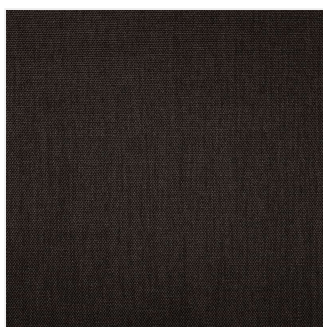
AVAILABLE COLORWAYS



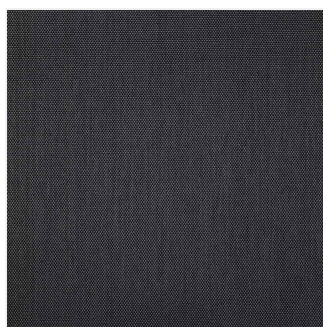
Charcoal-apricot



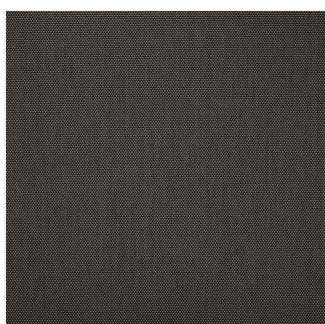
Charcoal-charcoal



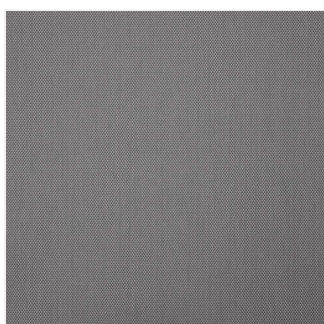
Charcoal-cocoa



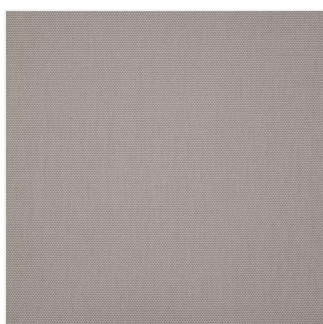
Charcoal-grey



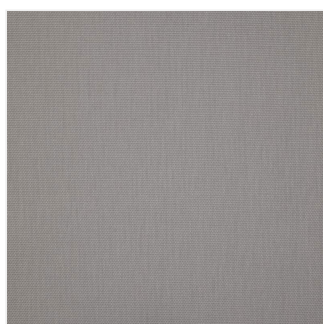
Charcoal-grey-stone



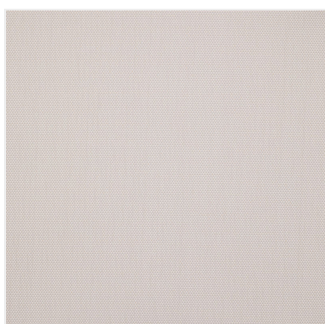
Pearl-grey



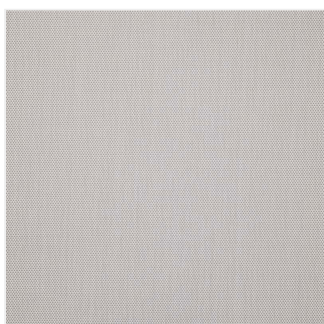
Pearl-linen



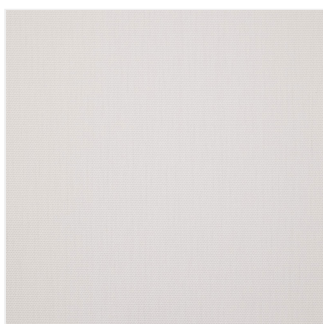
Pearl-pearl



White-linen



White-pearl



White-white

TECHNICAL SPECIFICATIONS

DESCRIPTION

The **E Screen™ 1%** series represents the industry standard for precision sun control textiles. Featuring a classic 2x2 basketweave, this fabric is meticulously designed to optimize the "latter" stage of interior comfort by significantly reducing solar heat gain and eliminating screen glare in workspaces and living areas. Composed of 36% fiberglass and 64% vinyl, E Screen™ 1% provides exceptional dimensional stability and longevity. Its 1% openness factor is the "essential" specification for south and west-facing elevations where thermal performance and UV protection (99%) are non-negotiable. Whether for executive offices or media rooms, E Screen™ 1% delivers a sophisticated architectural look with mission-critical performance.

KEY CHARACTERISTICS

- **Superior Privacy:** Low openness factor provides high daytime discretion.
- **Bacterial Resistance:** Treated for ASTM E2180 and ASTM G21 standards.
- **Acoustical Value:** High performance with NRC: 0.50 and SAA: 0.50.
- **Sustainable Design:** Lead-free, RoHS compliant, and GREENGUARD Gold certified.

TECHNICAL DATA

Openness	Weight (oz/yd ²)	Thickness (Inches)	Available Widths
1%	13.3 ± 5%	0.020 ± 5%	78?, 98?, 122?

TECHNICAL SPECS

Information for this section is coming soon. Please contact us to request this data.

CARE & HANDLING

- **Dusting:** Remove dust with a soft duster, cloth, vacuum cleaner, or compressed air. **Do not scrub.** [cite: 356]
- **Maintenance:** Do not use solvents or any abrasive substance which might damage the coating of the fabric. [cite: 357]
- **Minor Stains:** Clean with a soft cloth, sponge, or soft brush dipped in lukewarm soapy water using mild detergent. [cite: 358]
- **Drying:** Rinse with clean water and leave the blind down until completely dry. [cite: 359]