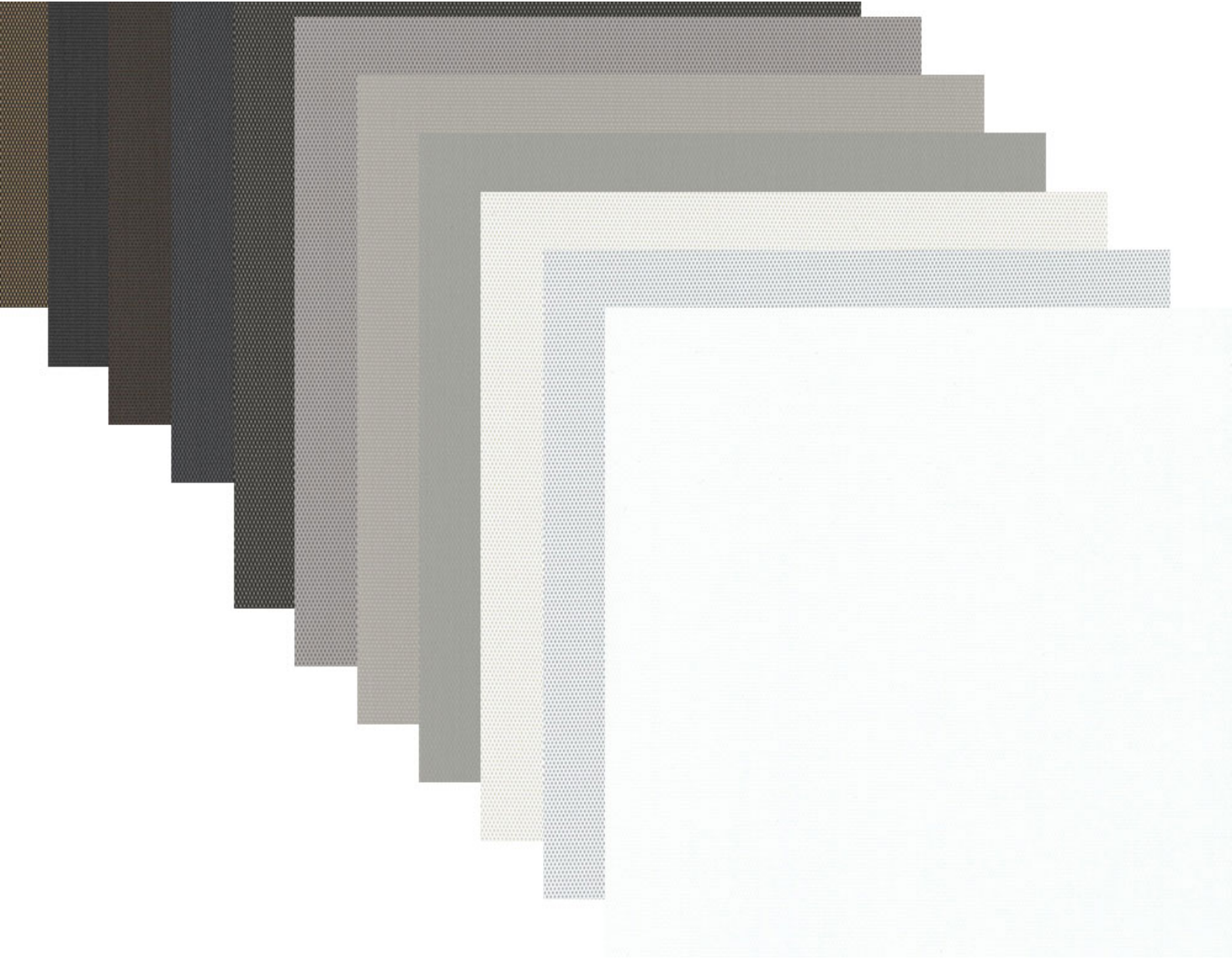


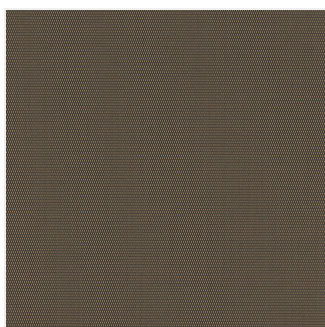
# E SCREEN™ 0.5%

Professional Architectural Specification

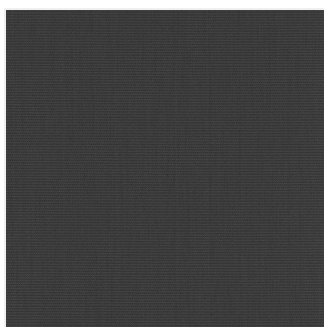


## AVAILABLE COLORWAYS

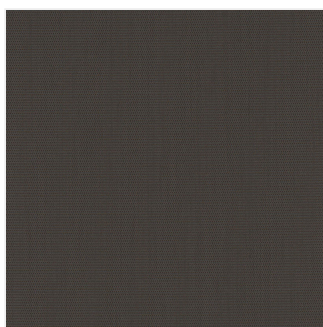
---



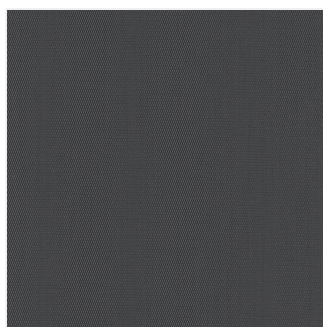
Charcoal-apricot



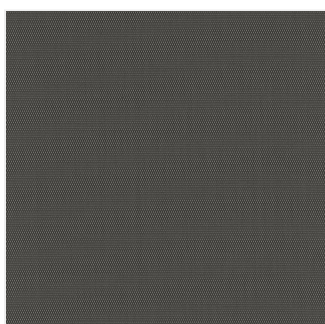
Charcoal-charcoal



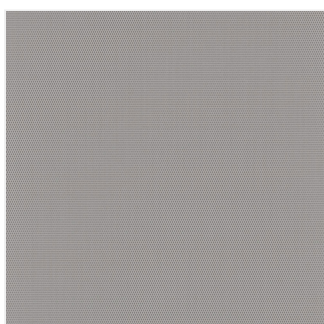
Charcoal-cocoa



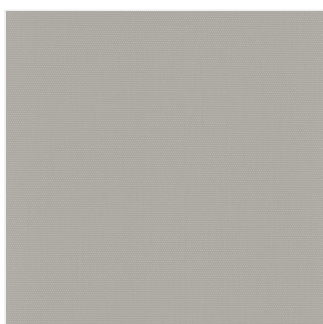
Charcoal-grey



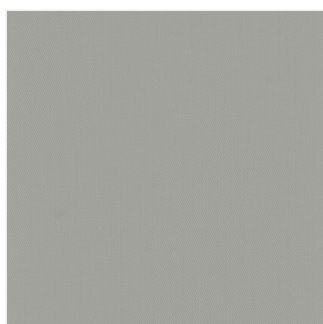
Charcoal-grey-stone



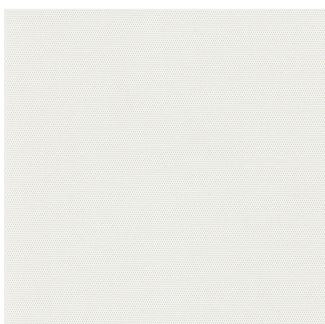
Pearl-grey



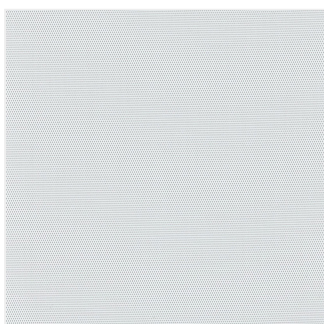
Pearl-linen



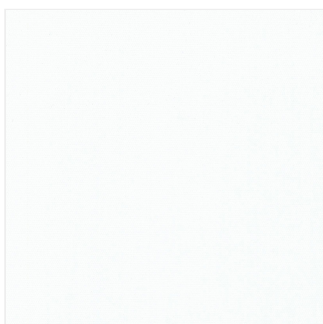
Pearl-pearl



White-linen



White-pearl



White-white

## TECHNICAL SPECIFICATIONS

### DESCRIPTION

Elevate your space with **E Screen™ 0.5%**, the most protective offering in the E Screen collection. This fabric features a classic 2x2 basketweave construction that has been optimized for high-exposure windows where solar heat gain and screen glare are "non-negotiable" challenges. Engineered with a robust 36% fiberglass core and a 64% vinyl coating, E Screen™ 0.5% delivers exceptional dimensional stability and durability for large-scale commercial roller shade systems. It is the "essential" specification for south and west-facing elevations, providing a sophisticated architectural look while harvesting just enough filtered natural light to keep interiors bright without the heat.

### KEY CHARACTERISTICS

- **Maximum Privacy:** High-density weave provides excellent daytime discretion.
- **Health-Conscious:** Treated for bacterial and fungal resistance (ASTM E2180, ASTM G21).
- **Acoustical Performance:** Tested for noise reduction (NRC: 0.05, SAA: 0.06).
- **Certified Safety:** Lead-free, RoHS compliant, and UL GREENGUARD Gold certified for low chemical emissions.

### TECHNICAL DATA

Openness	Weight (oz/yd <sup>2</sup> )	Thickness (Inches)	Available Width
0.5%	13.54 ± 5%	0.023 ± 5%	122?

### TECHNICAL SPECS

Information for this section is coming soon. Please contact us to request this data.

### CARE & HANDLING

- **Dusting:** Remove surface dust with a soft duster, cloth, vacuum cleaner, or compressed air. **Do not scrub.**
- **Maintenance:** Do not use solvents or any abrasive substances which might damage the fabric coating.
- **Cleaning:** For minor stains, clean with a soft cloth or sponge dipped in lukewarm soapy water using mild detergent.
- **Drying:** Rinse with clean water and leave the blind down until completely dry.