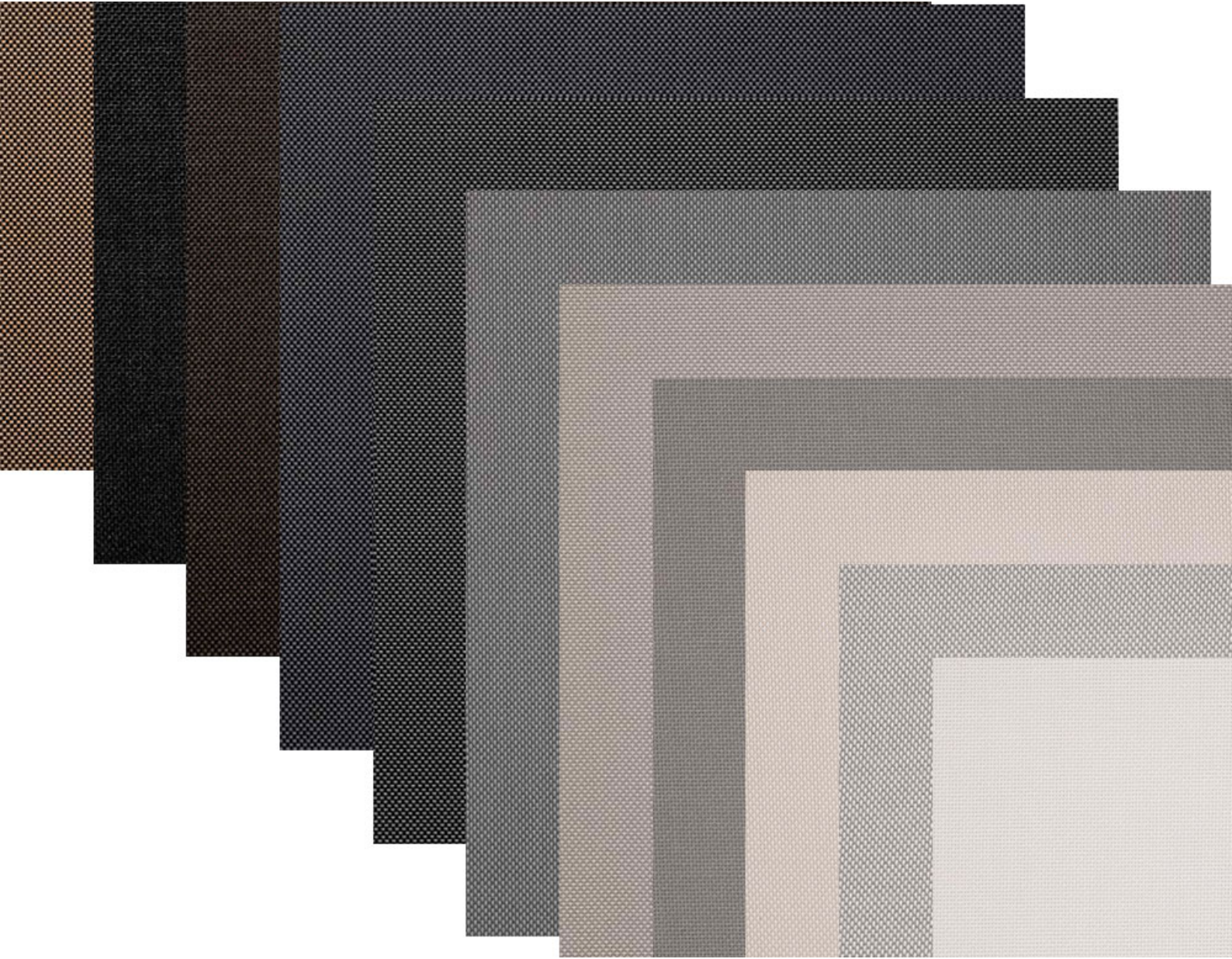
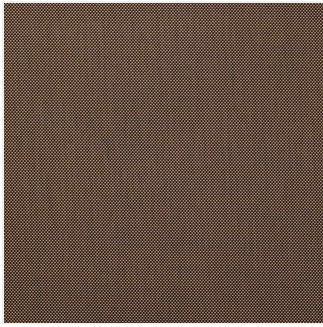


E SCREEN™ 3%

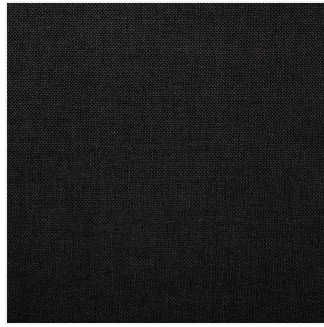
Professional Architectural Specification



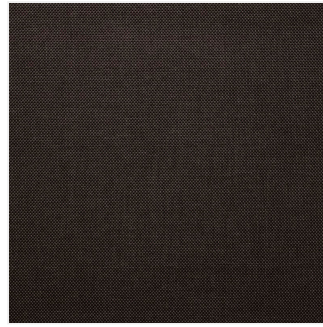
AVAILABLE COLORWAYS



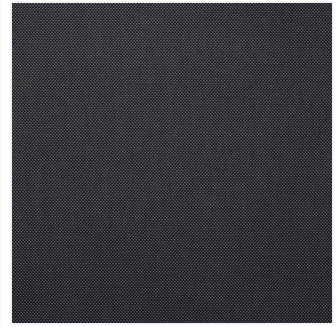
Charcoal-apricot



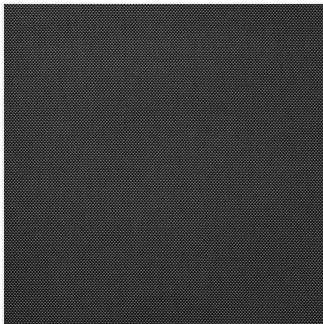
Charcoal-charcoal



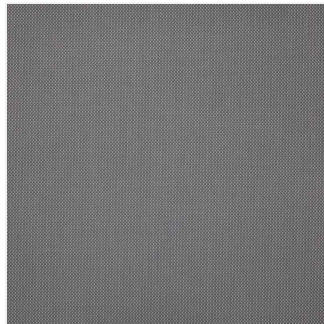
Charcoal-cocoa



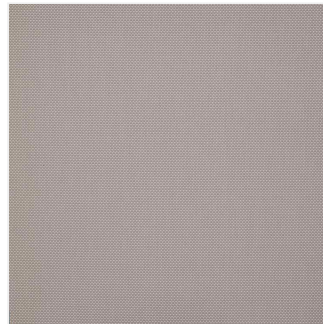
Charcoal-grey



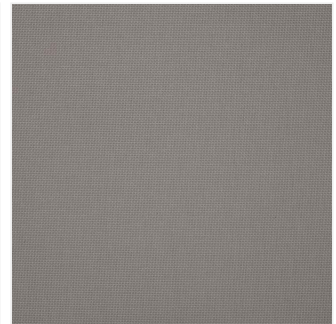
Charcoal-grey-stone



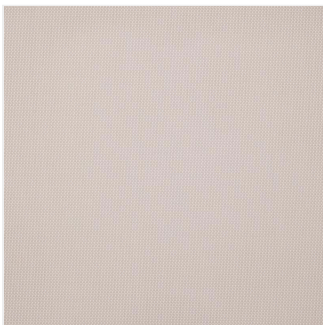
Pearl-grey



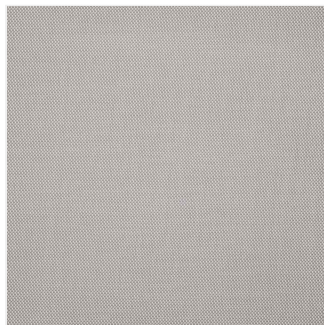
Pearl-linen



Pearl-pearl



White-linen



White-pearl



White-white

TECHNICAL SPECIFICATIONS

DESCRIPTION

E Screen™ 3% is designed for architectural environments that require high solar heat gain reduction without sacrificing the exterior view. The 2x2 basketweave construction ensures uniform light filtration, making it a "main character" in modern daylighting strategies.

Engineered with a 36% fiberglass core for superior flatness and 64% vinyl for ease of maintenance, E Screen™ 3% is a durable solution for both commercial and residential projects. It is a highly versatile fabric that excels in general office areas and living spaces, providing a refined aesthetic that stands the test of time.

KEY CHARACTERISTICS

- **Superior Privacy:** Low openness factor provides high daytime discretion. [cite: 331]
- **Bacterial Resistance:** Treated for ASTM E2180 and ASTM G21 standards. [cite: 352]
- **Acoustical Value:** High performance with NRC: 0.50 and SAA: 0.50. [cite: 353]
- **Sustainable Design:** Lead-free, RoHS compliant, and GREENGUARD Gold certified. [cite: 351]

TECHNICAL DATA

Openness	Weight (oz/yd ²)	Thickness (Inches)	Available Widths
3% [cite: 379]	11.6 ± 5% [cite: 382]	0.017 ± 5% [cite: 382]	78?, 98?, 122? [cite: 382]

TECHNICAL SPECS

Information for this section is coming soon. Please contact us to request this data.

CARE & HANDLING

- **Dusting:** Remove dust with a soft duster, cloth, vacuum cleaner, or compressed air. **Do not scrub.** [cite: 356]
- **Maintenance:** Do not use solvents or any abrasive substance which might damage the coating of the fabric. [cite: 357]
- **Minor Stains:** Clean with a soft cloth, sponge, or soft brush dipped in lukewarm soapy water using mild detergent. [cite: 358]
- **Drying:** Rinse with clean water and leave the blind down until completely dry. [cite: 359]