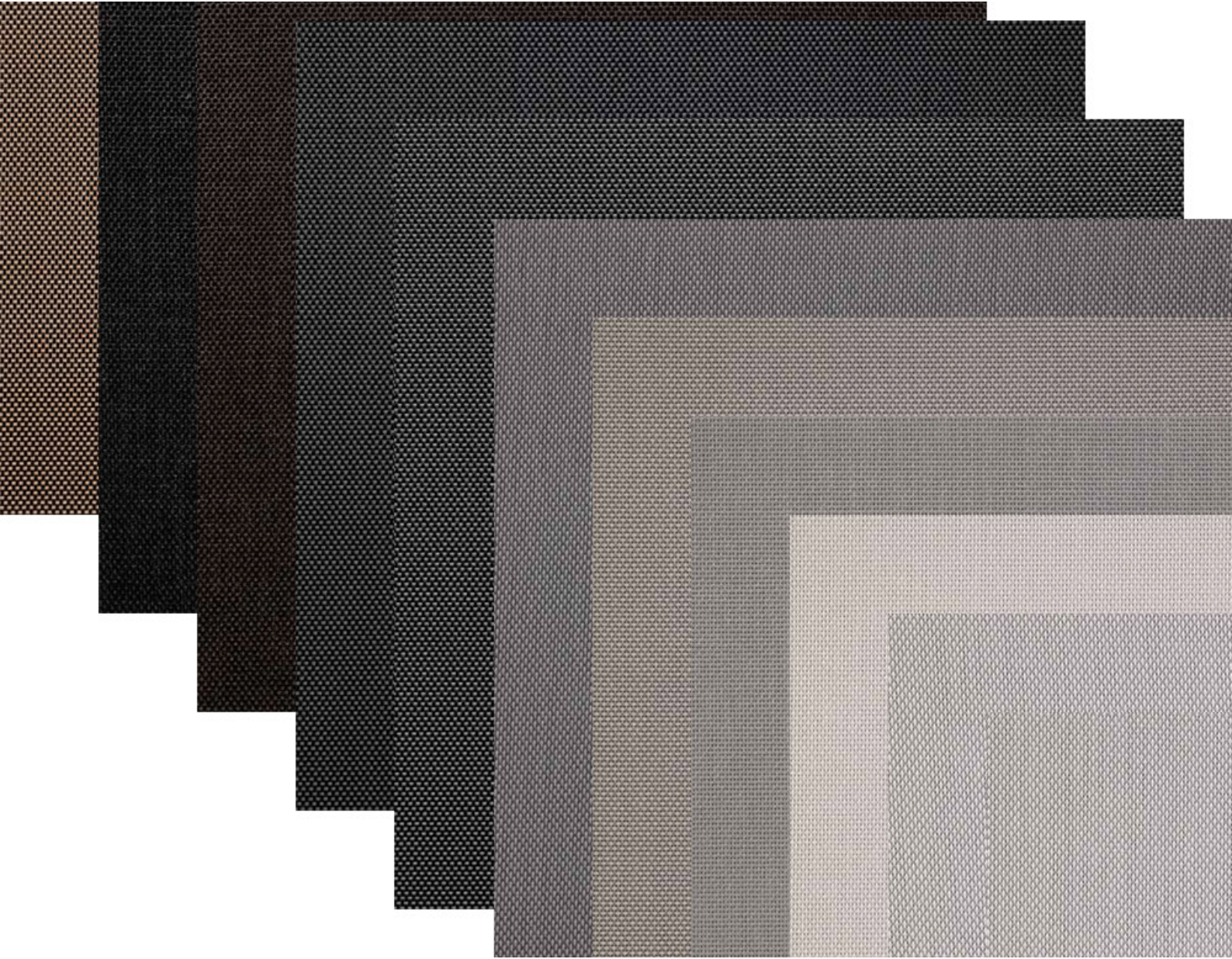


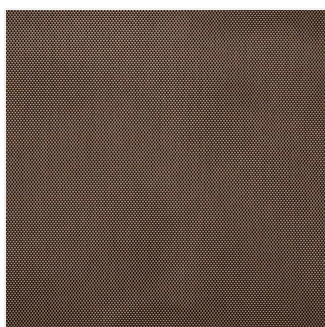
# E SCREEN™ 5%

Professional Architectural Specification

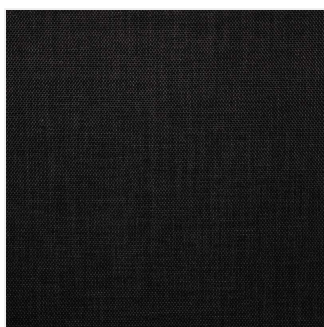


## AVAILABLE COLORWAYS

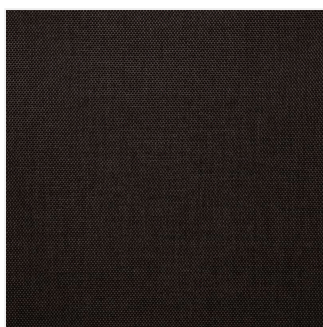
---



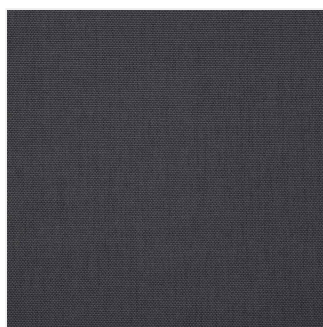
Charcoal-apricot



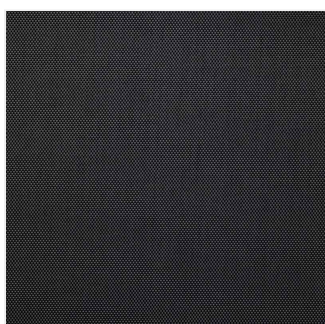
Charcoal-charcoal



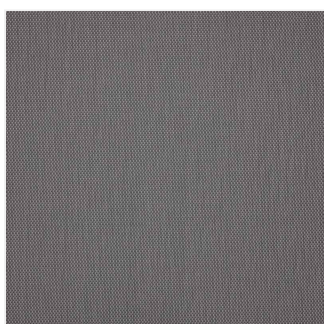
Charcoal-cocoa



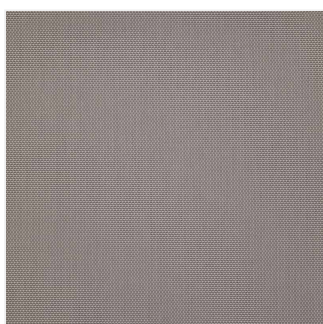
Charcoal-grey



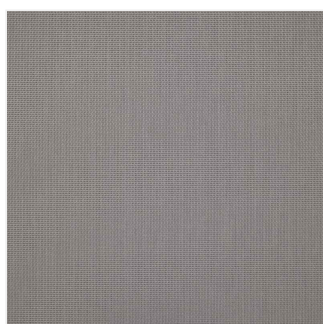
Charcoal-grey-stone



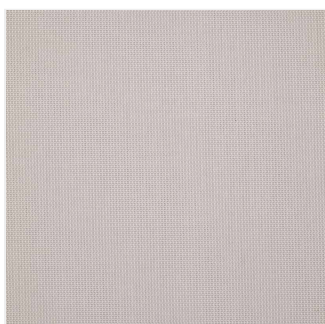
Pearl-grey



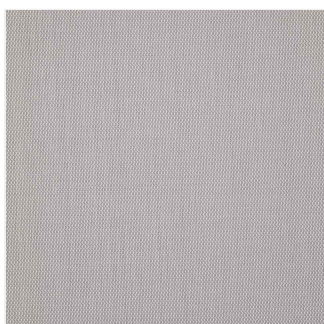
Pearl-linen



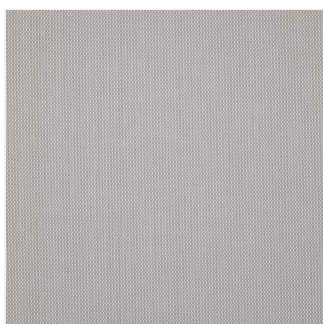
Pearl-pearl



White-linen



White-pearl



White-white

## TECHNICAL SPECIFICATIONS

### DESCRIPTION

**E Screen™ 5%** is designed for architectural environments that require high solar heat gain reduction without sacrificing the exterior view. The 2x2 basketweave construction ensures uniform light filtration, making it a "main character" in modern daylighting strategies. Engineered with a 36% fiberglass core for superior flatness and 64% vinyl for ease of maintenance, E Screen™ 5% is a durable solution for both commercial and residential projects. It is a highly versatile fabric that excels in general office areas and living spaces, providing a refined aesthetic that stands the test of time.

### KEY CHARACTERISTICS

- **Superior Privacy:** Low openness factor provides high daytime discretion. [cite: 331]
- **Bacterial Resistance:** Treated for ASTM E2180 and ASTM G21 standards. [cite: 352]
- **Acoustical Value:** High performance with NRC: 0.50 and SAA: 0.50. [cite: 353]
- **Sustainable Design:** Lead-free, RoHS compliant, and GREENGUARD Gold certified. [cite: 351]

### TECHNICAL DATA

Openness	Weight (oz/yd <sup>2</sup> )	Thickness (Inches)	Available Widths
5% [cite: 423]	10.7 ± 5% [cite: 425]	0.016 ± 5% [cite: 425]	78?, 98?, 122? [cite: 425]

### TECHNICAL SPECS

Information for this section is coming soon. Please contact us to request this data.

### CARE & HANDLING

- **Dusting:** Remove dust with a soft duster, cloth, vacuum cleaner, or compressed air. **Do not scrub.** [cite: 356]
- **Maintenance:** Do not use solvents or any abrasive substance which might damage the coating of the fabric. [cite: 357]
- **Minor Stains:** Clean with a soft cloth, sponge, or soft brush dipped in lukewarm soapy water using mild detergent. [cite: 358]
- **Drying:** Rinse with clean water and leave the blind down until completely dry. [cite: 359]